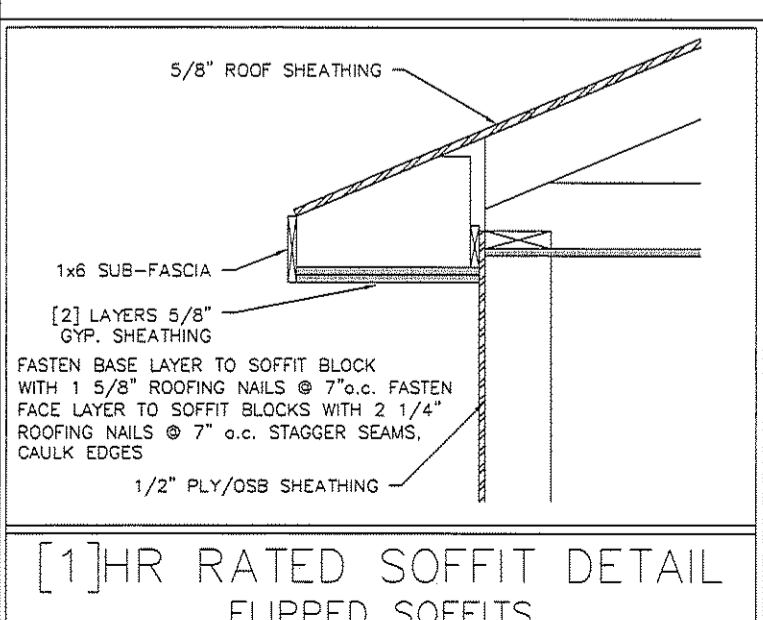
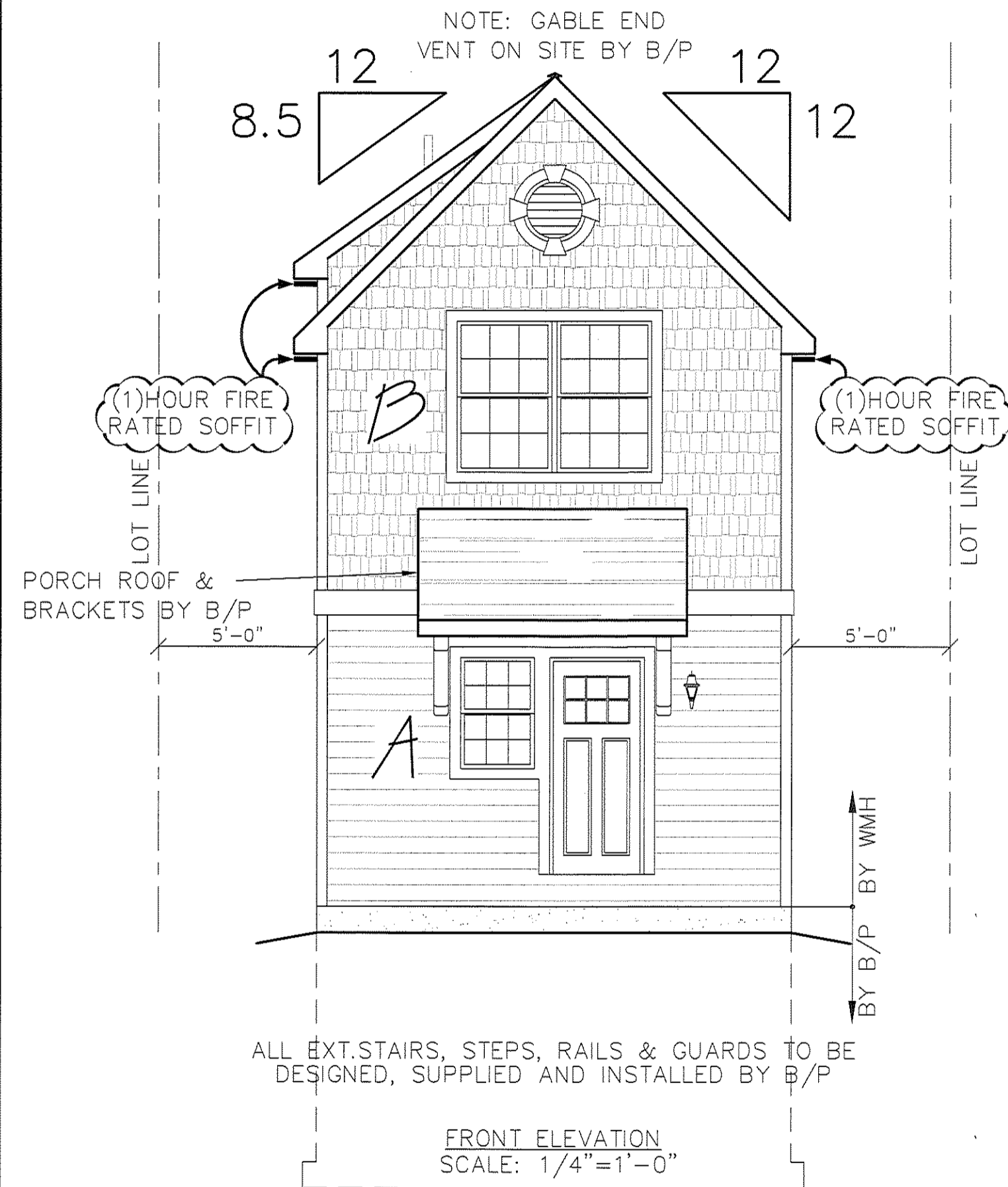


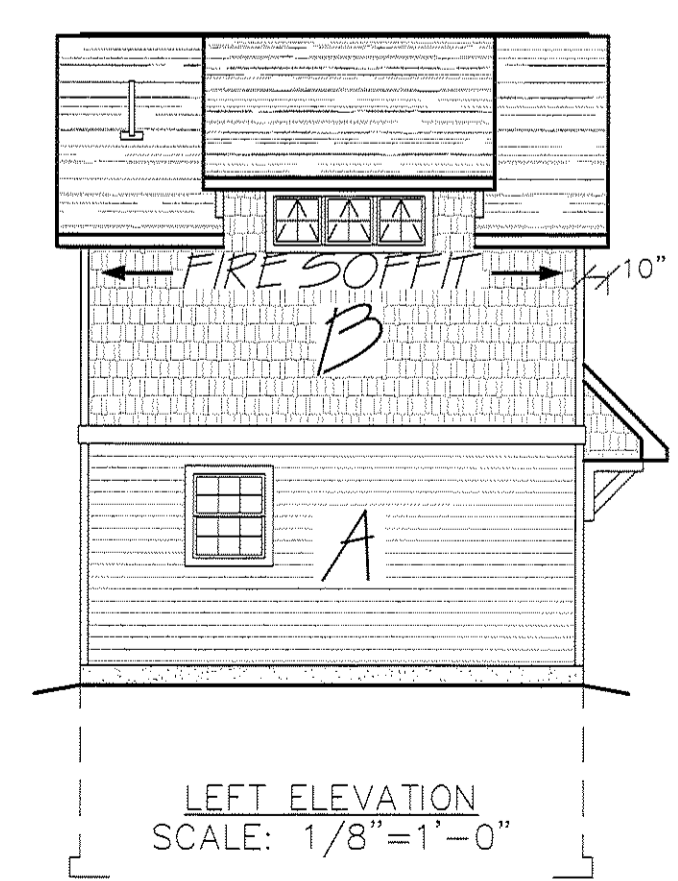
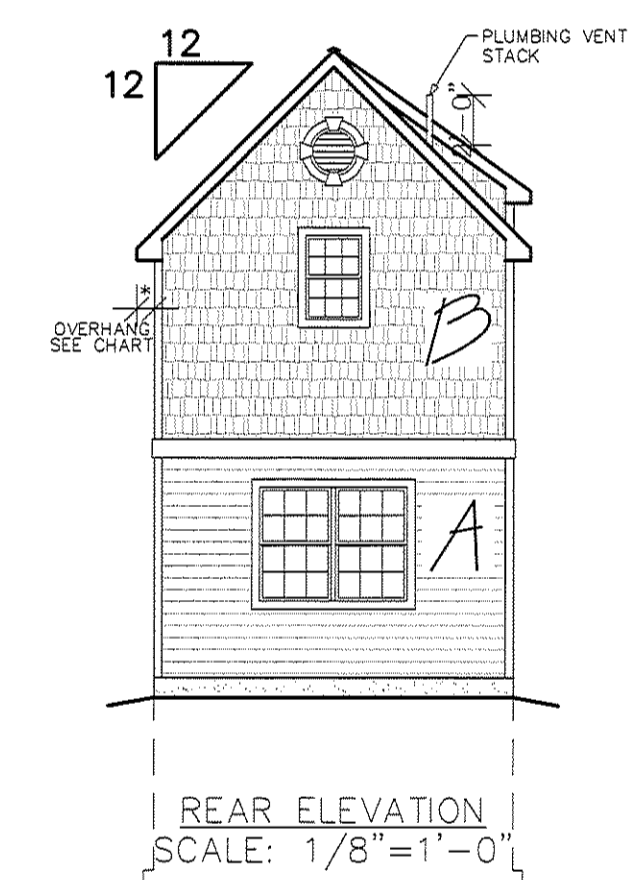
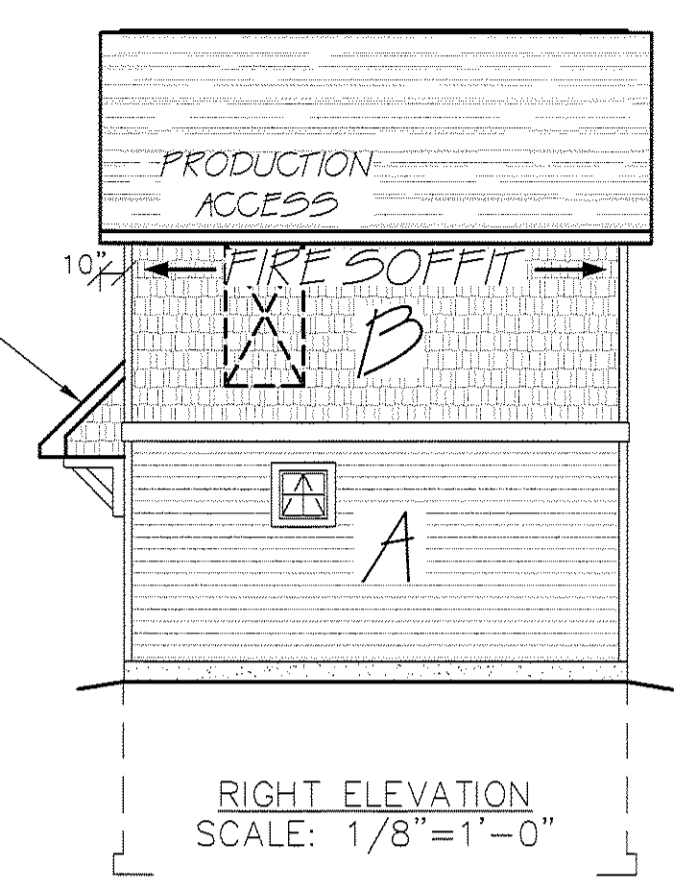
OVERHANG DIMENSION (\*)

ROOF PITCH	HOUSE WIDTH		
	24'-0"	26'-0"/30'-0"	27'-8"/31'-8"
5/12	16"	11"	16"
7/12	16"	11"	16"
9/12	12"	11"	12"
12/12	8 3/4"	8 3/4"	8 3/4"



\*SIDING, PVC TRIM & CORNERS ON SITE BY B/P\*

PORCH ROOF & BRACKETS BY B/P

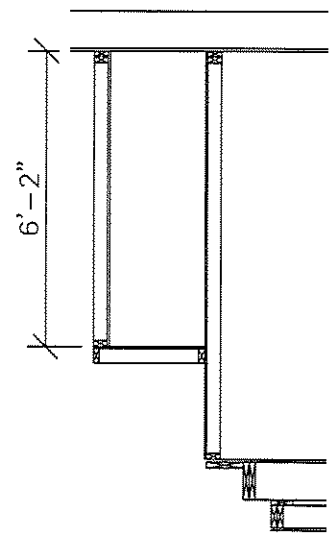


SEE STANDARD NOTES & DETAILS DWG #8

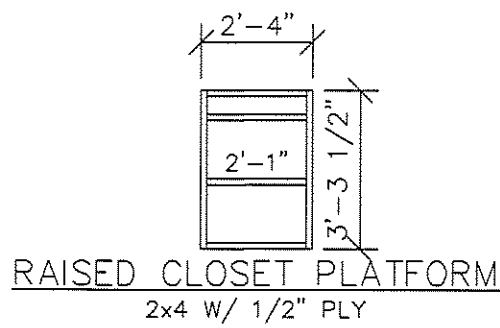
THIRD PARTY INSPECTION AGENCY		PE / RA	
SERIAL No.	PRODUCTION N	REVISION	DATE
CHECK	DATE	CHECK	DATE
V.GIORGIO	10/12/07		
BUILDER: BUILDER ID# 38455 HOMEOWNER:		<b>COLONIAL CTM-L</b> <b>ELEVATIONS</b>	
Westchester Modular Homes Inc 30 Reagans Mill Road, Wingdale, New York, 12594 Tel (845)832-9400 Fax (845)832-6698			
USE GROUP: SINGLE FAMILY	DESIGNER: V.GIORGIO	DATE: 02/08/16	SCALE: AS NOTED
CONST. TYPE: VB			PAGE: 1

FRONT

ZERO



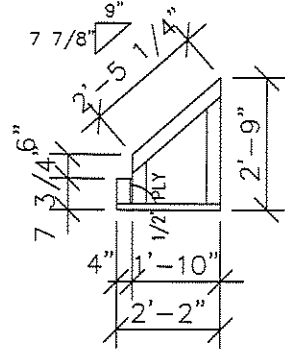
RAISED CLOSET FLOOR DETAIL



RAISED CLOSET PLATFORM  
2x4 W/ 1/2" PLY

STAIRS:  
2 RISERS @ 7 7/8"  
1 TREADS @ 9"  
OPEN RIGHT  
OB - IO = 3'-1 1/4"  
  
14 RISERS @ 7 7/8"  
13 TREADS @ 9"  
2 1/2 OPEN RIGHT  
OB - OB = 3'-3"  
OB - IO = 3'-6"

ZERO

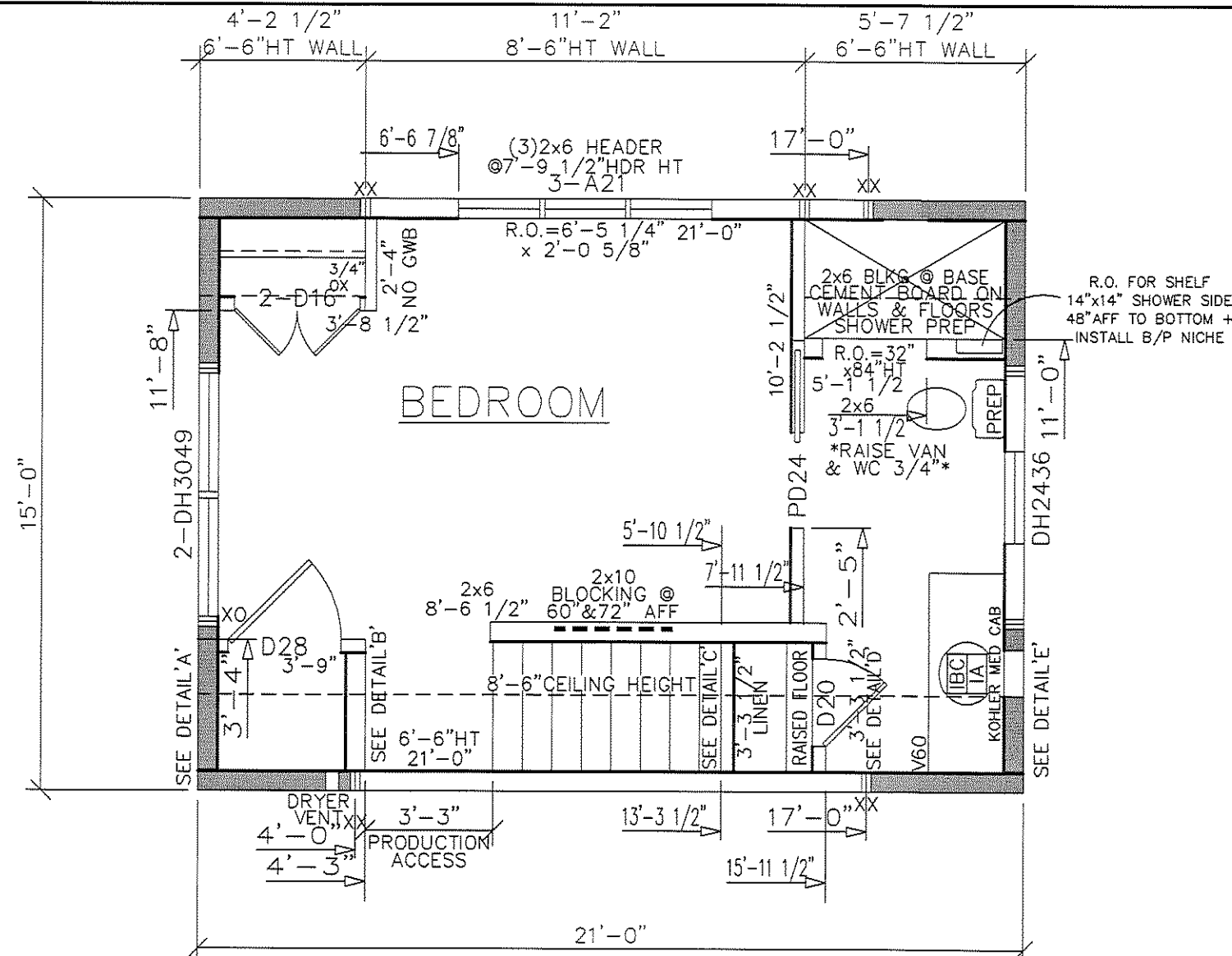
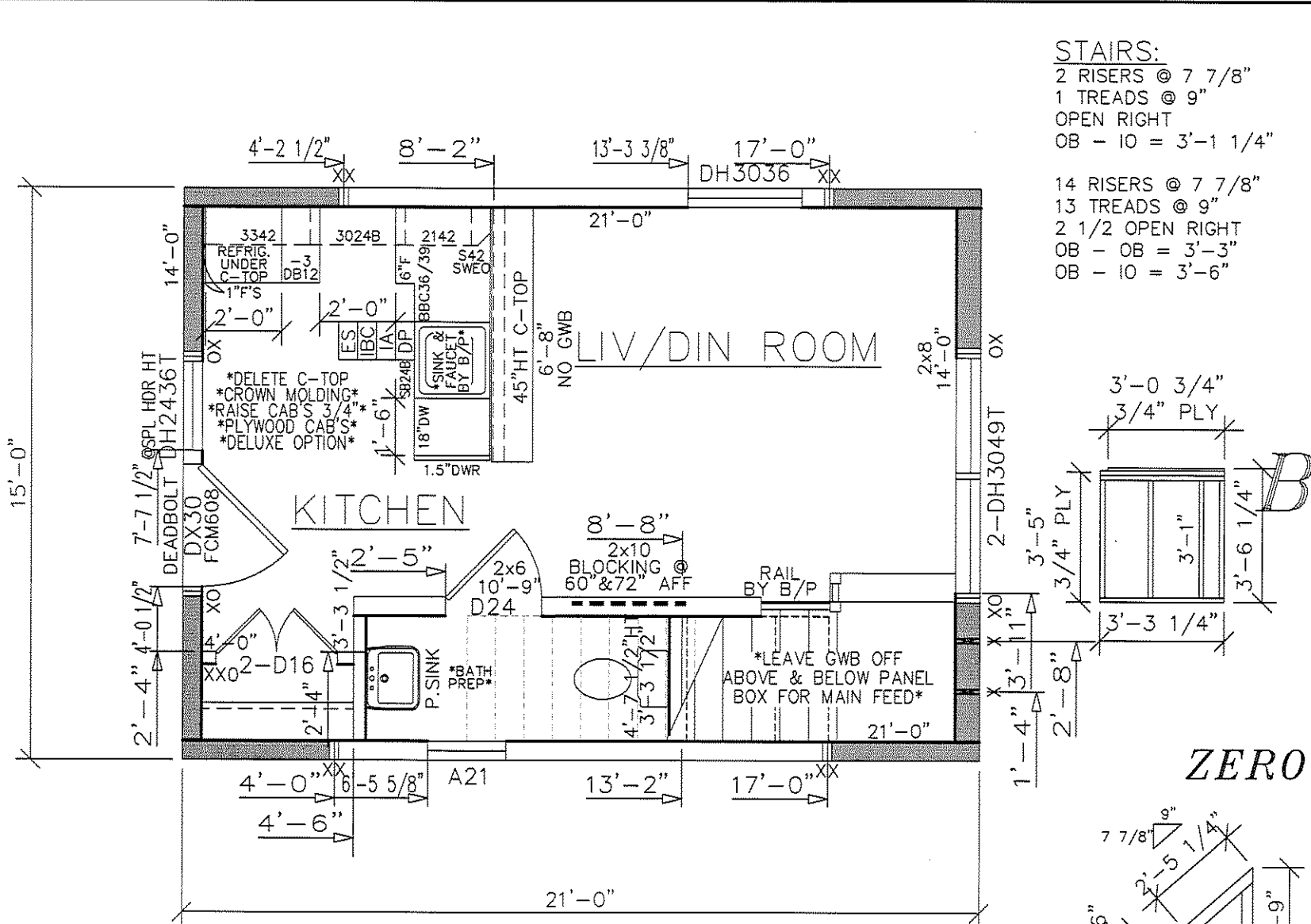


1ST FLOOR PLAN  
\*9'-0" 1ST FLOOR CEILING\*  
ANDERSEN 200 SERIES WINDOWS W/SILLS & STOOLS  
-SOLID SMOOTH 2 PANEL FLAT DOORS W/STICKING  
-UPGRADE BASE & WINDSOR CASING  
-S/L BASE TRIM THROUGHOUT IN FULL LENGTHS  
-R21 EXTERIOR WALL INSULATION

2ND FLOOR PLAN  
\*8'-6" 2ND FLOOR CEILING\*  
ANDERSEN 200 SERIES WINDOWS W/SILLS & STOOLS  
-SOLID SMOOTH 2 PANEL FLAT DOORS W/STICKING  
-UPGRADE BASE & WINDSOR CASING  
-S/L BASE TRIM THROUGHOUT IN FULL LENGTHS  
-R21 EXTERIOR WALL INSULATION

NOTE:  
PER STATE OF RHODE ISLAND, DEPARTMENT OF  
ADMINISTRATION, ALL APPROVALS ARE BASED ON  
HOUSE BEING A SINGLE FAMILY DWELLING PER IRC  
101.2 SCOPE AND THE EXCEPTION. SEE ATTACHED  
LETTER FROM BUILDING/ZONING OFFICIAL

\* DESIGNED TO THE FOLLOWING:  
-2012 INTERNATIONAL RESIDENTAL CODE, RI AMENDMENTS  
-2014 NATIONAL ELECTRICAL CODE  
-2012 INTERNATIONAL ENERGY CONSERVATION CODE, RI AMENDMENTS  
-2012 WOOD FRAME CONSTRUCTION MANUAL



SEE STANDARD NOTES & DETAILS DWG #8

THIRD PARTY INSPECTION AGENCY		PE / RA	
SERIAL NO	PRODUCTION N	REVISION	DATE
		CHECK	DATE
<b>COLONIAL CTM-L</b> <b>PRODUCTION PLANS</b>		Westchester Modular Homes Inc 30 Reagans Mill Road, Wingdale, New York, 12594 Tel (845)832-9400 Fax (845)832-6698	
USE GROUP: SINGLE FAMILY	CONST. TYPE: VB	DESIGNER: V. GIORGIO	DATE: 02/08/16
		SCALE: 1/4" = 1'-0"	PAGE: 4