



SCALE: 1/4" = 1'0"

DRAWN BY A. J. FEITH
REGIONAL SALES CONSULTANT
WESTCHESTER MODULAR
HOMES, INC.

BUILDER:

DATE:

JULY 2012

HOMEOWNER:

USE GROUP

5B

CONST. TYPE:

WOOD
FRAME

FALMOUTH

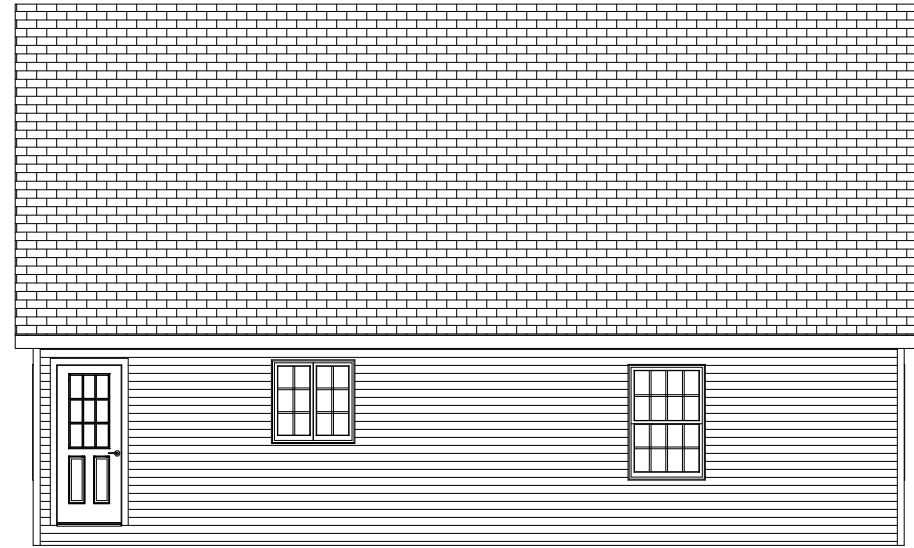
FRONT ELEVATION

PAGE:

1A



LEFT



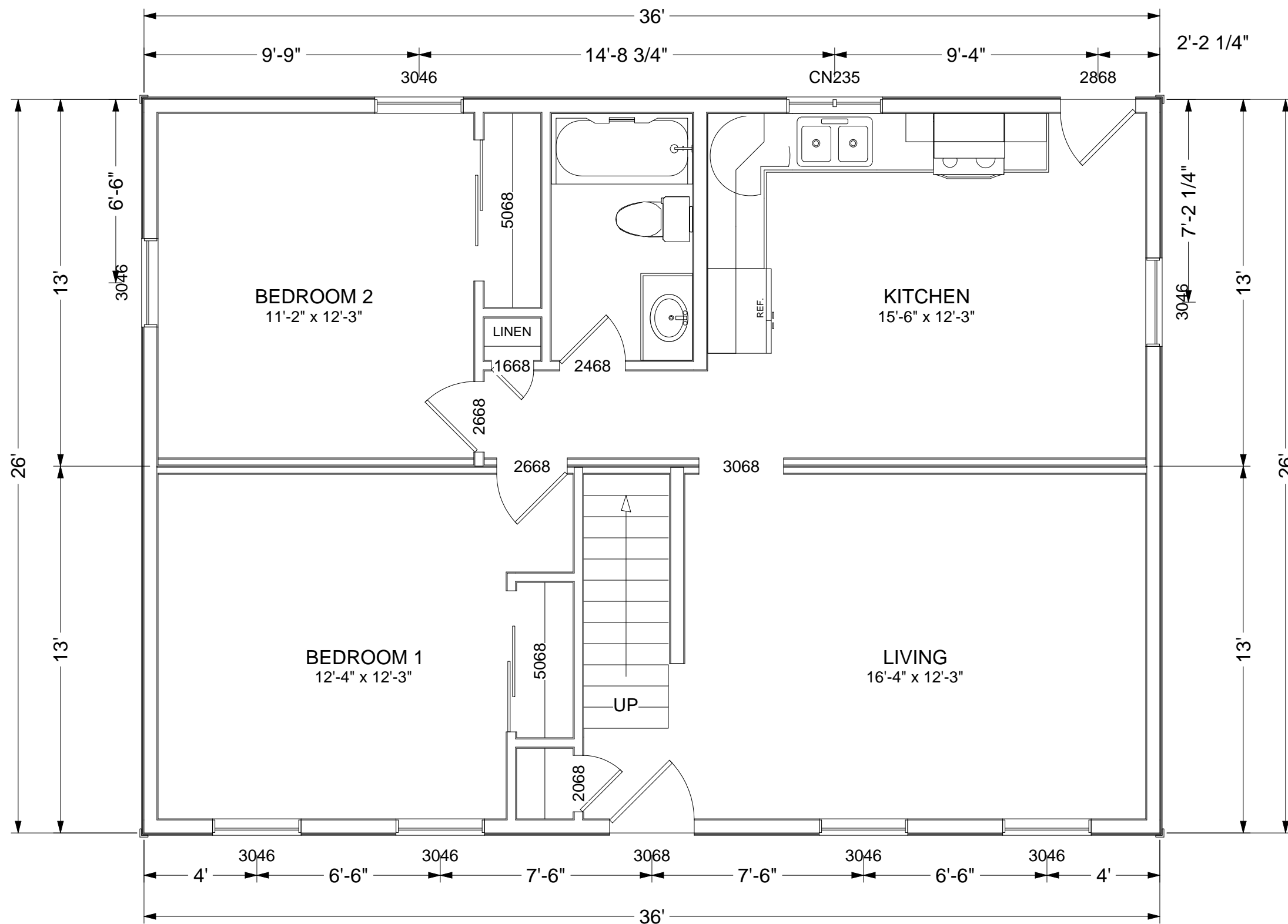
REAR



RIGHT

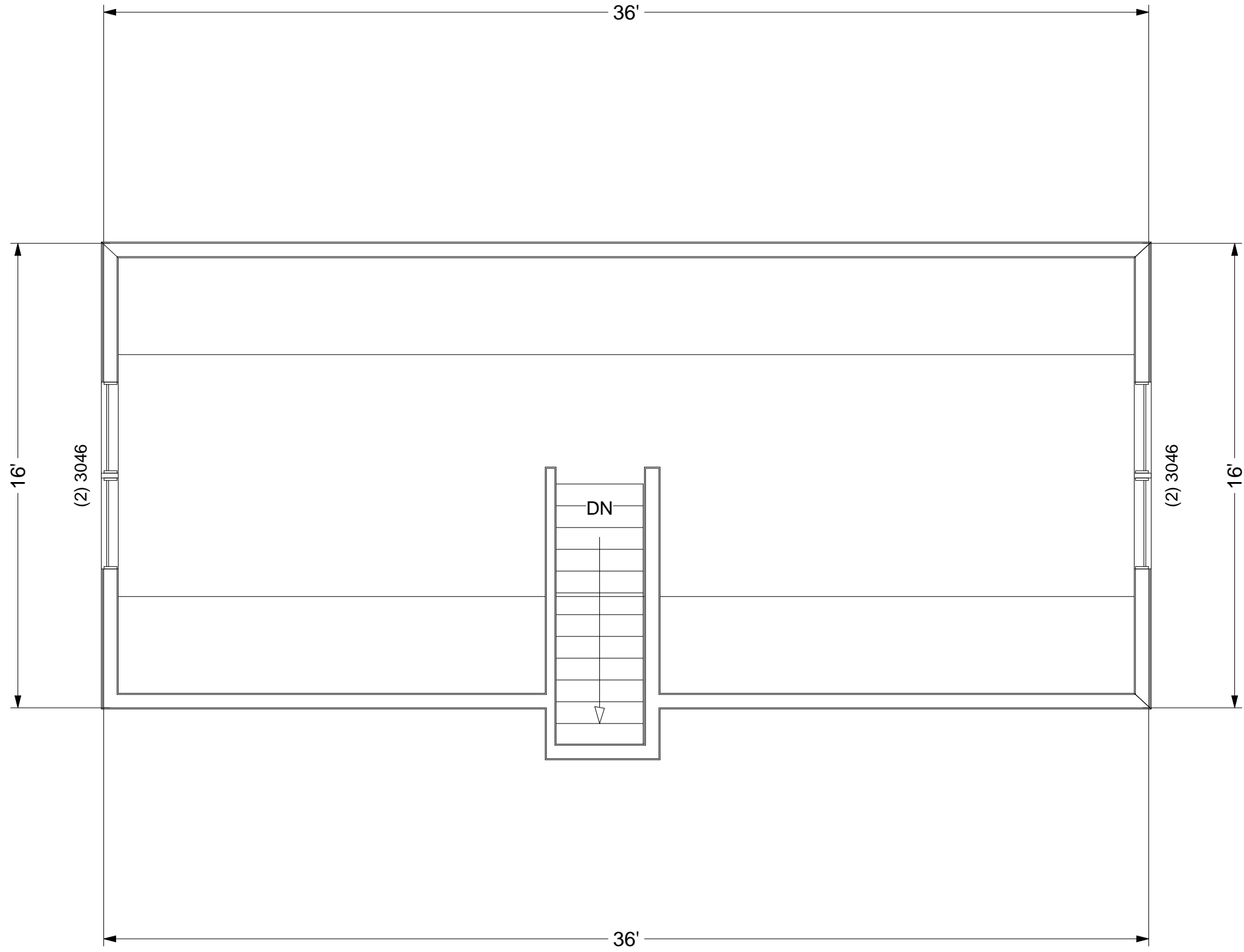
SCALE: 1/8" = 1'0"

DRAWN BY A. J. FEITH REGIONAL SALES CONSULTANT WESTCHESTER MODULAR HOMES, INC.	BUILDER:	USE GROUP	PAGE: 1B
	HOMEOWNER:	5B	
DATE: JULY 2012		CONST. TYPE: WOOD FRAME	FALMOUTH SIDE AND REAR ELEVATIONS



SCALE: 1/4" = 1'0"

DRAWN BY A. J. FEITH REGIONAL SALES CONSULTANT WESTCHESTER MODULAR HOMES, INC.	BUILDER:	USE GROUP	PAGE:
	HOMEOWNER:	5B	2A
DATE: JULY 2012		CONST. TYPE: WOOD FRAME	FALMOUTH FLOOR PLAN



SCALE: 1/4" = 1'0"

DRAWN BY A. J. FEITH REGIONAL SALES CONSULTANT WESTCHESTER MODULAR HOMES, INC.	BUILDER:	USE GROUP	PAGE: 2B
	HOMEOWNER:	5B	
DATE: JULY 2012		CONST. TYPE: WOOD FRAME	