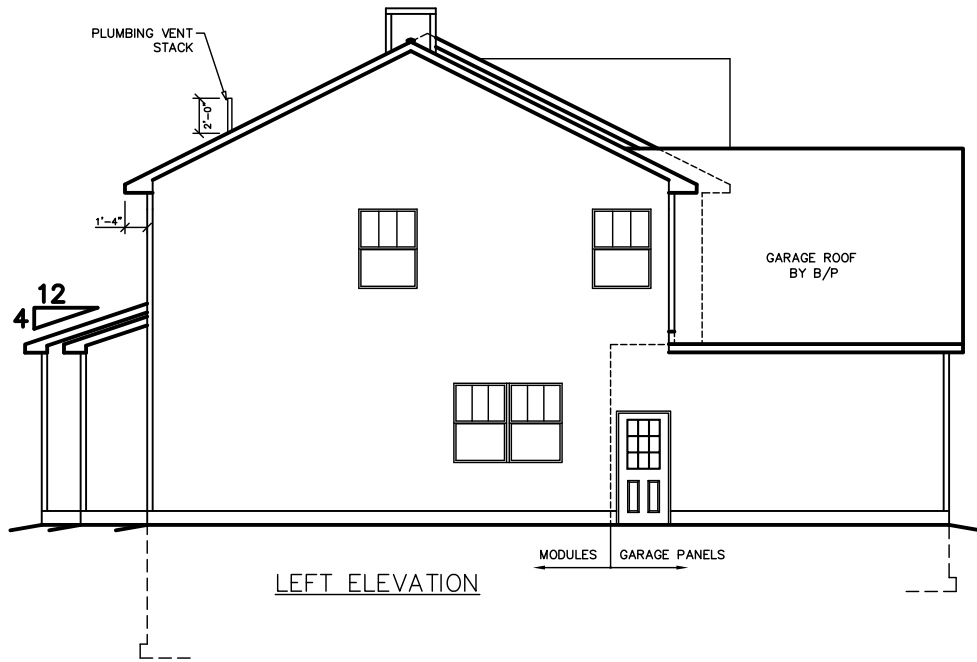
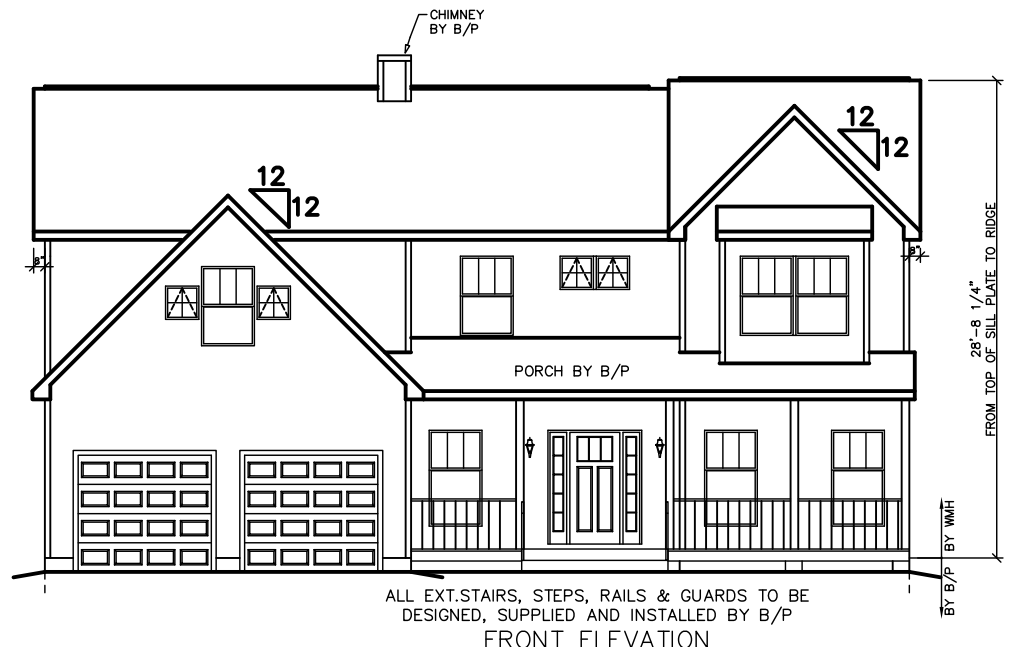


OVERHANG DIMENSION (*)			
ROOF PITCH	HOUSE WIDTH		
	24'-0"	26'-0"/30'-0"	27'-8"/31'-8"
5/12	16"	11"	16"
7/12	16"	11"	16"
9/12	12"	11"	12"
12/12	8 3/4"	8 3/4"	8 3/4"

NOTE:  
WINDOW GRILLE PATTERNS SHOWN ARE FOR ANDERSEN 400  
SERIES WINDOWS. GRILLE PATTERNS FOR OTHER SERIES OR  
MANUFACTURERS MAY BE DIFFERENT.



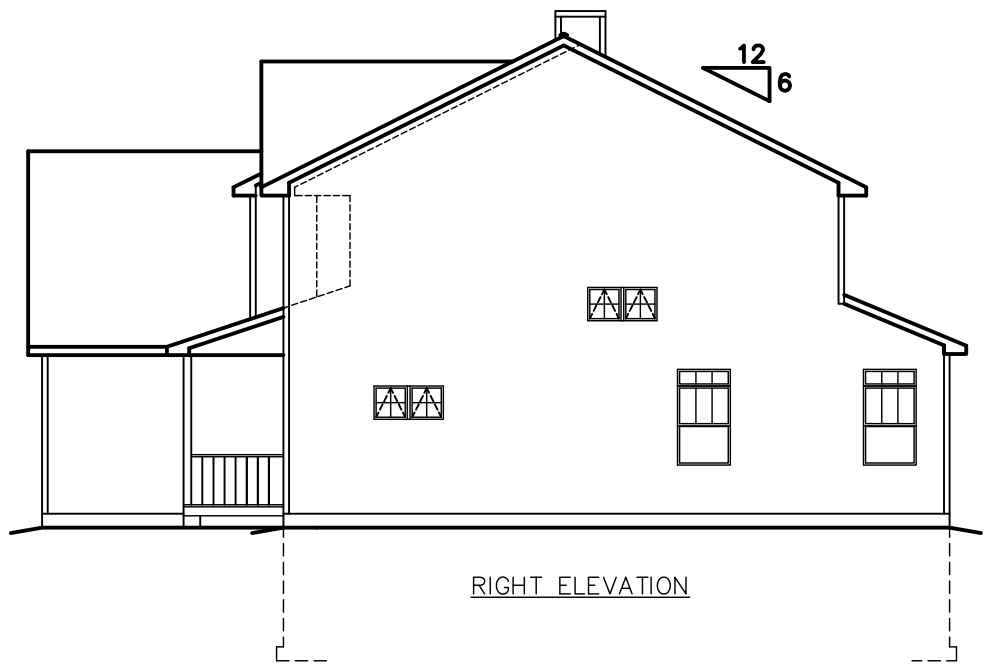
LEFT ELEVATION



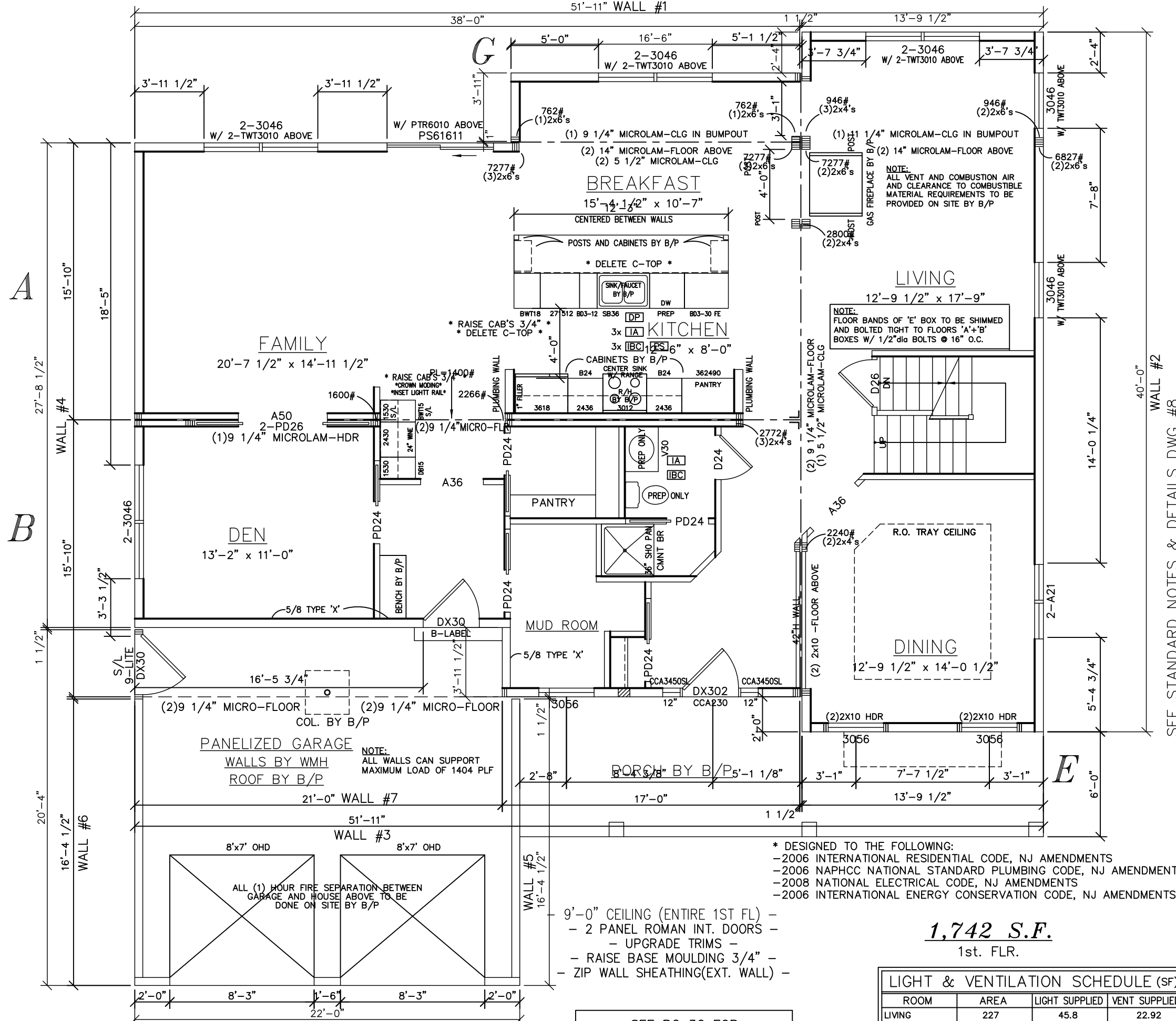
FRONT ELEVATION



REAR ELEVATION



RIGHT ELEVATION



SEE STANDARD NOTES & DETAILS DWG #8

SERIAL No.	<b>09161</b>	THIRD PARTY INSPECTION AGENCY	
PRODUCTION No.	<b>5647</b>	PE / RA	
REVISION	RC		
DATE	12/23/09		
	5/13/10		
CHECK			
DATE			

**COLONIAL CTM-R**  
**FIRST FLOOR PLAN**

Westchester Modular Homes Inc  
30 Reagans Mill Road, Wingdale, New York, 12594  
Tel (845)832-9400 Fax (845)832-6698

\* DESIGNED TO THE FOLLOWING:  
 -2006 INTERNATIONAL RESIDENTIAL CODE, NJ AMENDMENTS  
 -2006 NAPHCC NATIONAL STANDARD PLUMBING CODE, NJ AMENDMENTS  
 -2008 NATIONAL ELECTRICAL CODE, NJ AMENDMENTS  
 -2006 INTERNATIONAL ENERGY CONSERVATION CODE, NJ AMENDMENTS

**1,742 S.F.**  
1st. FLR.

LIGHT & VENTILATION SCHEDULE (SF)			
ROOM	AREA	LIGHT SUPPLIED	VENT SUPPLIED
LIVING	227	45.8	22.92
FAMILY	309	58.2	27.02
KITCHEN/BKFS	263	25.8	11.46
DINING	180	31.0	16.08
DEN	145	20.6	11.46

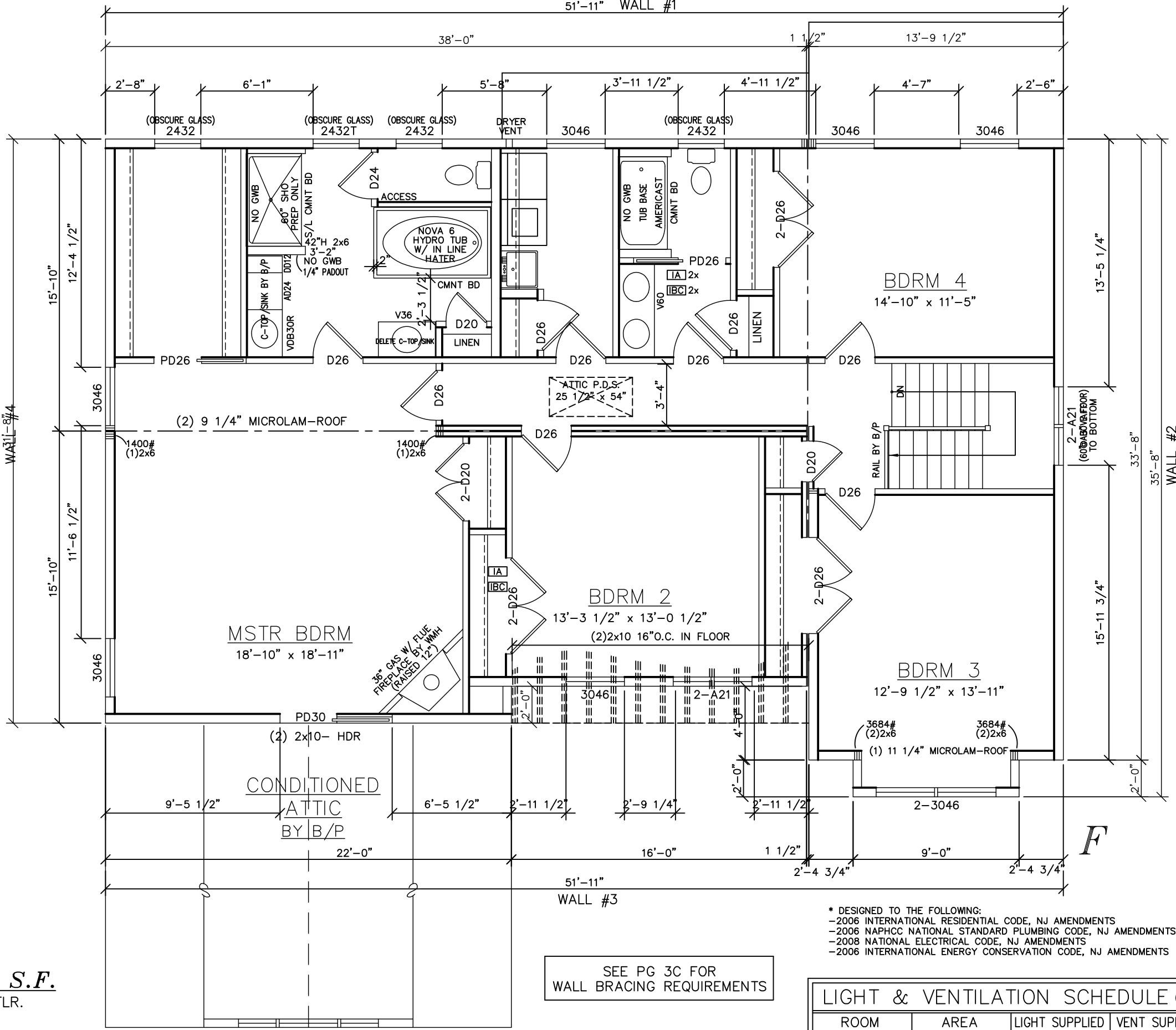
- 9'-0" CEILING (ENTIRE 1ST FL) -
- 2 PANEL ROMAN INT. DOORS -
- UPGRADE TRIMS -
- RAISE BASE MOULDING 3/4" -
- ZIP WALL SHEATHING(EXT. WALL) -

SEE PG 3C FOR  
WALL BRACING REQUIREMENTS

NOTE:  
 ALL WINDOWS WITH A SILL HEIGHT LESS THAN 24" ABOVE FINISHED FLOOR AND WITH A EXT. HEIGHT OF GREATER THAN 6'-0" TO GRADE SHALL BE EQUIPPED WITH FALL PROTECTION SUPPLIED AND INSTALLED BY B/P ON SITE IN ACCORDANCE W/ R613.2

WALL #8 (APA WALL) SEE PG 3C

USE GROUP: R5  
 CONST. TYPE: VB  
 DESIGNER: RBC  
 DATE: 10/15/09  
 SCALE: 1/4" = 1'-0"  
 PAGE: 3A



**1,657 S.F.**  
2nd. FLR.

**NOTE:**  
ALL WINDOWS WITH A SILL HEIGHT LESS THAN 24" ABOVE FINISHED FLOOR AND WITH A EXT. HEIGHT OF GREATER THAN 6'-0" TO GRADE SHALL BE EQUIPPED WITH FALL PROTECTION SUPPLIED AND INSTALLED BY B/P ON SITE IN ACCORDANCE W/ R613.2

SEE PG 3C FOR WALL BRACING REQUIREMENTS

- \* DESIGNED TO THE FOLLOWING:  
 -2006 INTERNATIONAL RESIDENTIAL CODE, NJ AMENDMENTS  
 -2006 NAPHCC NATIONAL STANDARD PLUMBING CODE, NJ AMENDMENTS  
 -2008 NATIONAL ELECTRICAL CODE, NJ AMENDMENTS  
 -2006 INTERNATIONAL ENERGY CONSERVATION CODE, NJ AMENDMENTS

LIGHT & VENTILATION SCHEDULE (SF)			
ROOM	AREA	LIGHT SUPPLIED	VENT SUPPLIED
MSTR BDRM	340	**20.6	**11.46
BDRM 2	173	15.5	7.53
BDRM 3	178	20.6	11.46
BDRM 4	169	20.6	11.46

\*\* B/P IS RESPONSIBLE TO PROVIDE ADDITIONAL MECHANICAL VENT AS NOTED ON PLANS

SEE STANDARD NOTES & DETAILS DWG #8

<b>THIRD PARTY INSPECTION AGENCY</b>	
<b>PE / RA</b>	
SERIAL No. <b>09161</b> PRODUCTION No. <b>5647</b>	DATE: 12/23/09 DATE: 5/13/10
REVISION RC CHECK DATE	REVISION RC CHECK DATE
<b>COLONIAL CTM-R</b> <b>SECOND FLOOR PLAN</b>	
<b>Westchester Modular Homes Inc</b> 30 Reagans Mill Road, Wingdale, New York, 12594 Tel (845)832-9400 Fax (845)832-6698	
HOMEOWNER:	BUILDER:
USE GROUP: <b>R5</b>	CONST. TYPE: <b>VB</b>
DESIGNER: <b>RC</b>	DATE: 10/15/09
SCALE: 1/4" = 1'-0"	PAGE: <b>3B</b>