



SCALE: 3/16" = 1'0"

DRAWN BY A. J. FEITH
REGIONAL SALES CONSULTANT
WESTCHESTER MODULAR
HOMES, INC.

BUILDER:

DATE:
JULY 2012

HOMEOWNER:

USE GROUP

5B

CONST. TYPE:
WOOD
FRAME

DOVER

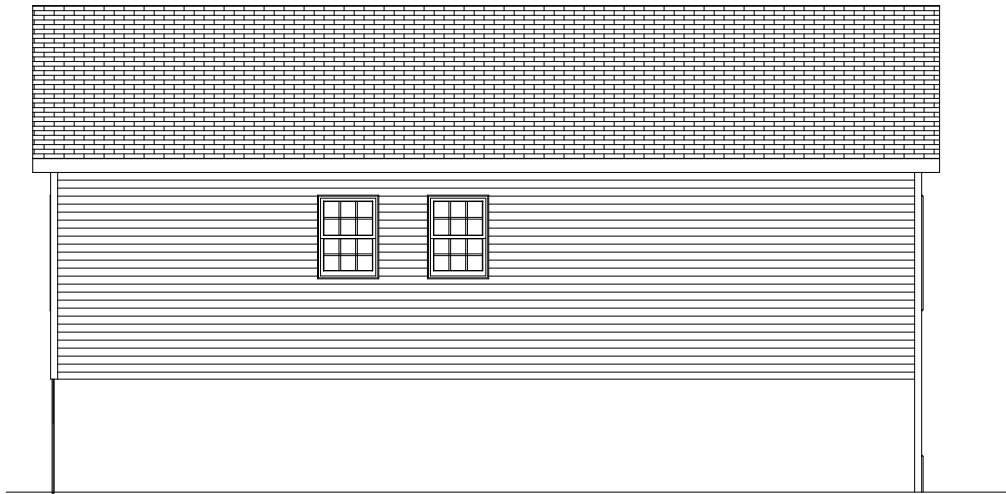
FRONT ELEVATION

PAGE:

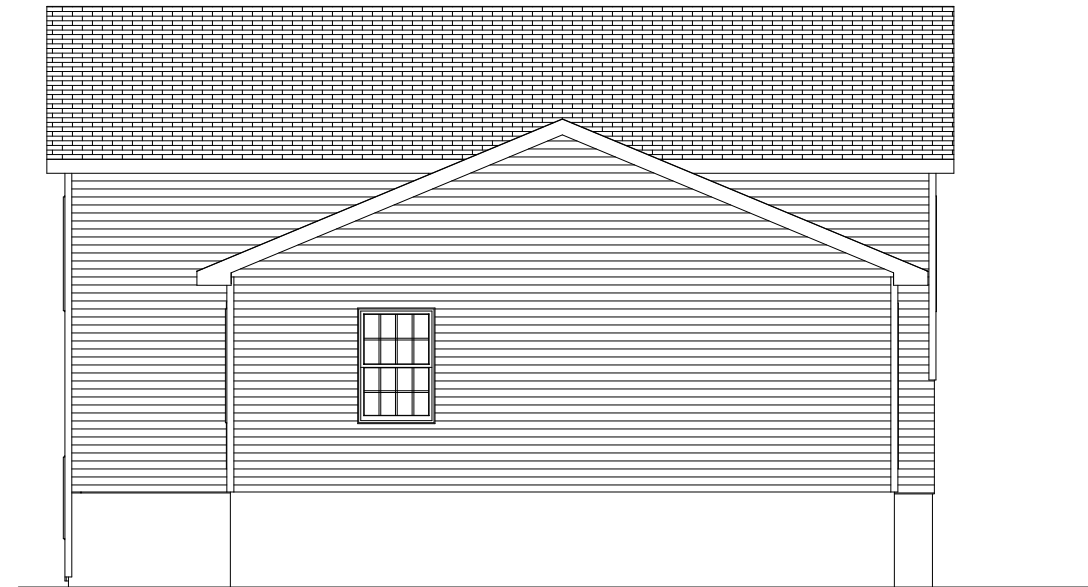
1A



REAR



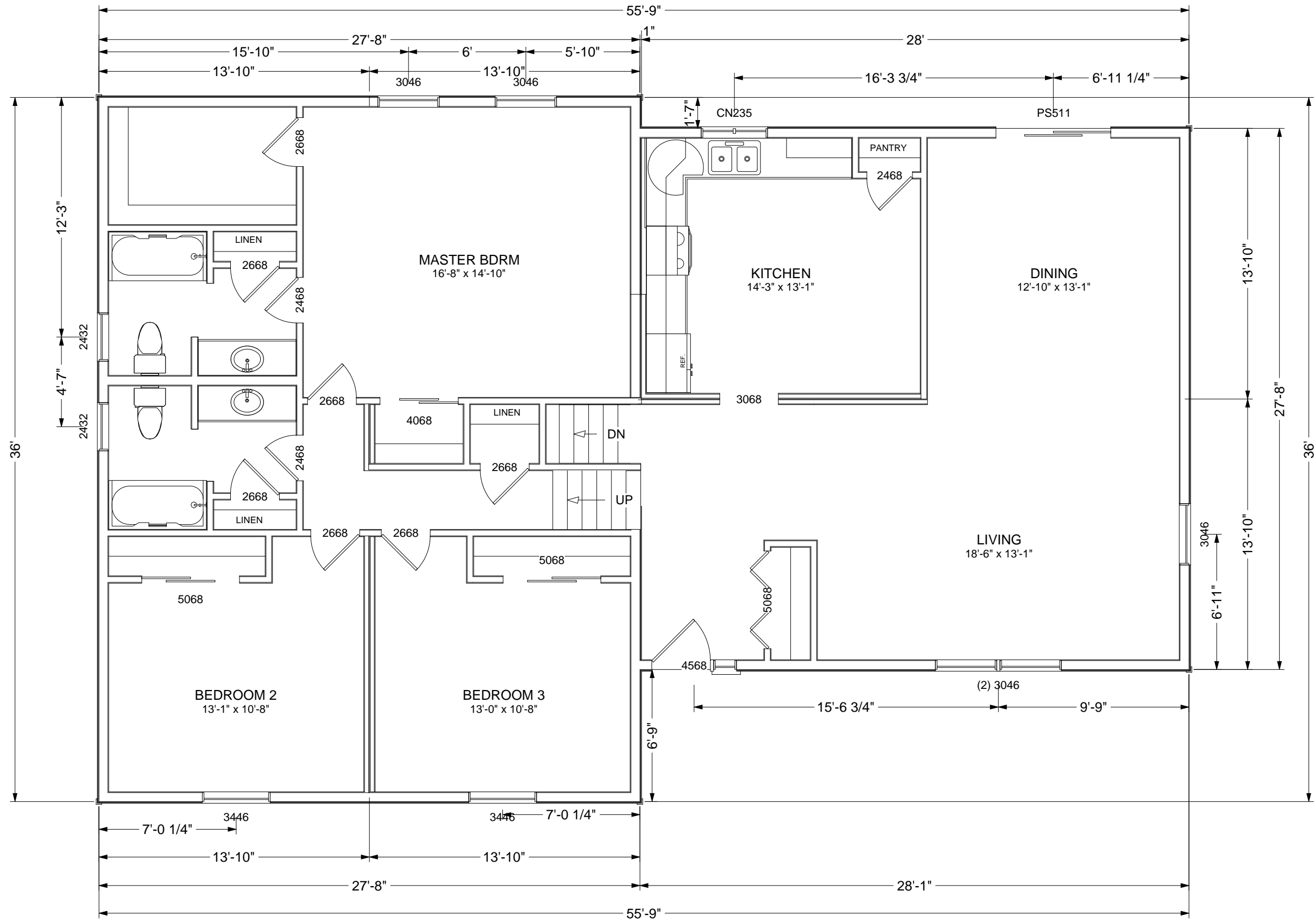
LEFT



RIGHT

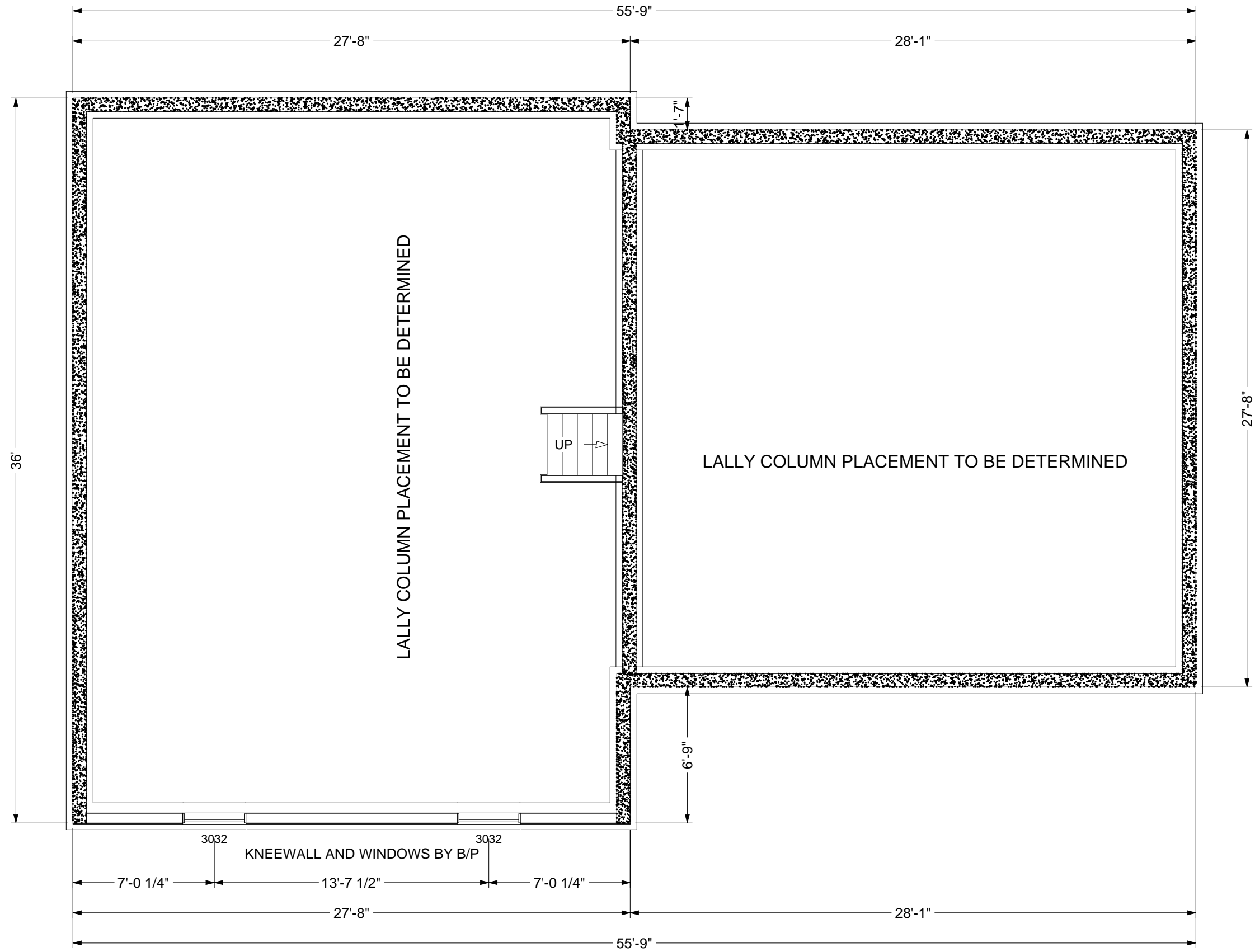
SCALE: 1/8" = 1'0"

DRAWN BY A. J. FEITH REGIONAL SALES CONSULTANT WESTCHESTER MODULAR HOMES, INC.		BUILDER:	USE GROUP	PAGE:
		HOMEOWNER:	5B	1B
DATE: JULY 2012		WOOD FRAME	DOVER SIDE AND REAR ELEVATIONS	



SCALE: 3/16" = 1'0"

DRAWN BY A. J. FEITH REGIONAL SALES CONSULTANT WESTCHESTER MODULAR HOMES, INC.	BUILDER:	USE GROUP	PAGE:
	HOMEOWNER:	5B	2A
DATE: JULY 2012	CONST. TYPE: WOOD FRAME	DOVER FIRST FLOOR	



DRAWN BY A. J. FEITH
 REGIONAL SALES CONSULTANT
 WESTCHESTER MODULAR
 HOMES, INC.

DATE:
 JULY 2012

BUILDER:

HOMEOWNER:

USE GROUP
5B

CONST. TYPE:
 WOOD
 FRAME

DOVER

FOUNDATION

PAGE: